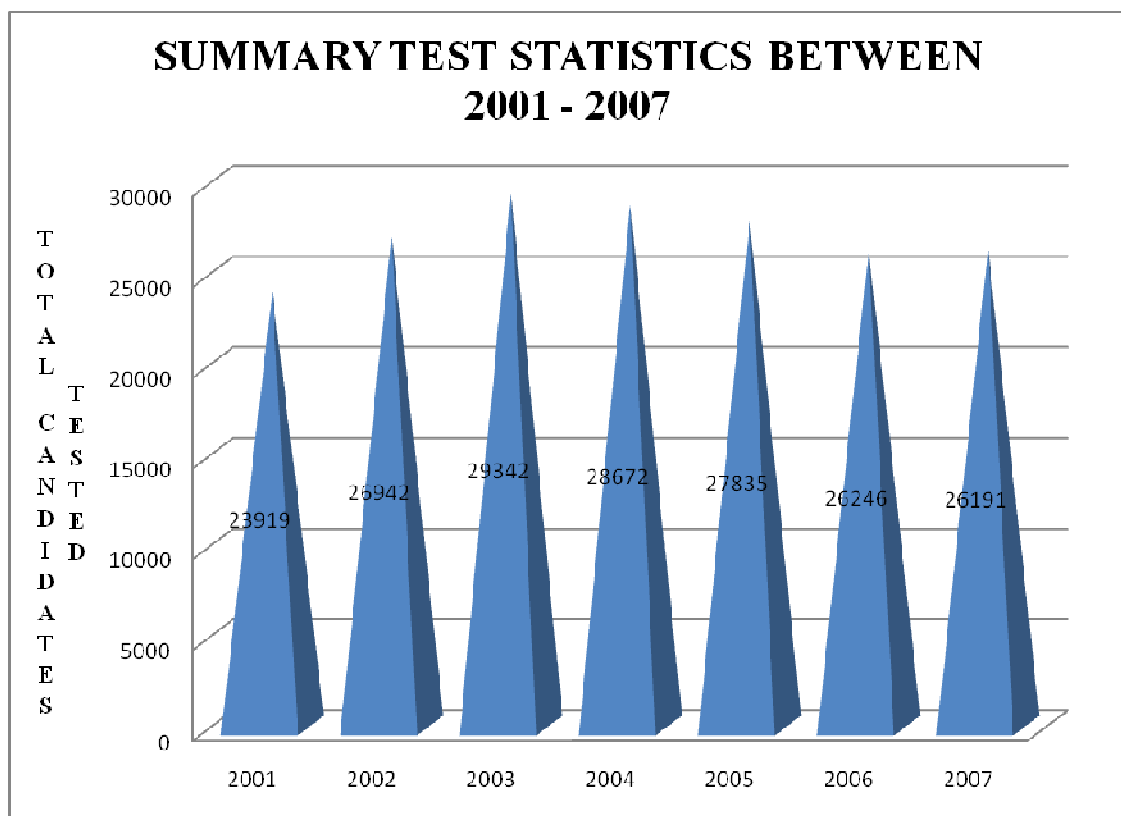


**Table1: Summary Test Statistics for the Period 2001-2007**

Year	Total candidates tested
2001	23,919
2002	26,942
2003	29,342
2004	28,672
2005	27,835
2006	26,246
2007	26,191
<b>TOTAL</b>	<b>189,147</b>

**Figure 1**

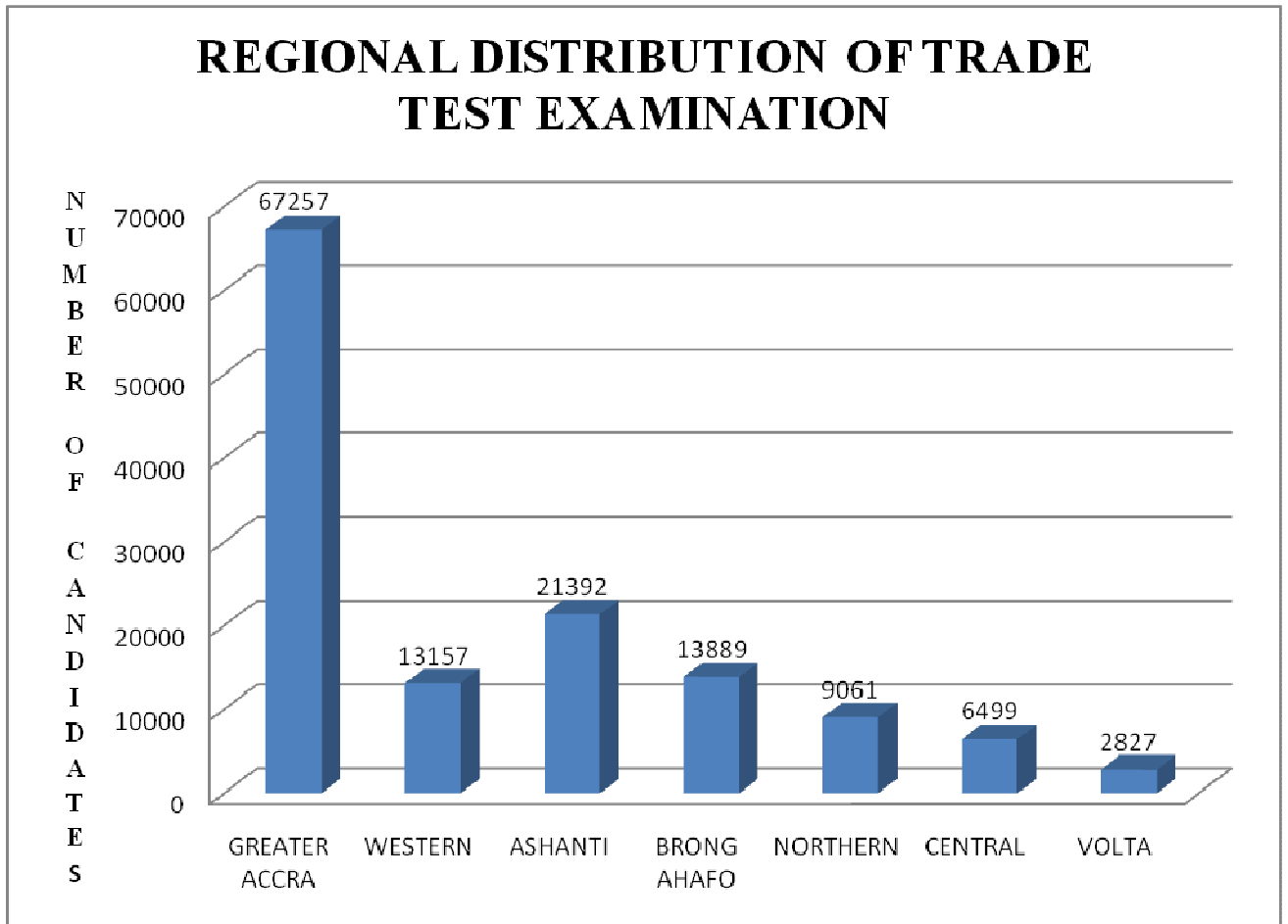


**Table2 :**

**Regional Distribution of Trade Test Participation Between 2001 and 2007**

<b>Region</b>	<b>Total Candidate Tested</b>
<b>Greater Accra Region</b>	<b>67,257</b>
<b>Western Region</b>	<b>13,157</b>
<b>Ashanti Region</b>	<b>21,392</b>
<b>Brong Ahafo Region</b>	<b>13,889</b>
<b>Northern Region</b>	<b>9,061</b>
<b>Central Region</b>	<b>6,499</b>
<b>Eastern Region</b>	<b>4,757</b>
<b>Volta Region</b>	<b>2,827</b>
<b>TOTAL</b>	<b>138,839</b>

**Figure 2: Graph Showing Regional Distribution of TradeTest Examination**



**Table 3:****Regular Trades Participation for Proficiency and Trade Test 2006 and 2007**

	2006			2007			2006/2007
	TT	PRO	TOTAL	TT	PRO	TOTAL	CUMULATIVE
Painting	6	52	58	-	258	258	316
Carpentry & Joinery	721	616	1,337	661	472	1,133	2,470
Upholstery		21	21	3	54	57	78
Motor Vehicle Mechanic	257	242	499	1,085	481	1,566	2,065
Masonry	452	289	741	1,706	1,157	2,863	3,604
Building Draughtsmanship	144		144	1,174		1,174	1,318
Plumbing	66	108	174	251	220	471	645
Motor Vehicle Mech Elec.	29	215	244	80	95	175	419
Motor Vehicle Body Repair	18	137	155	71	96	167	322
Welding	76	425	501	243	366	609	1110
Mechanic Fittings	6	80	86	30	87	117	203
Machining	25	65	90	138	60	198	288
General Electrical	520	195	715	1,942	391	2,333	3,048
Construction Electrical	68	146	214	424	282	706	920
Radio & TV Electrical	106	121	227	434	223	657	884
Computer Hardware Service	39		39	102	236	338	377
Refrigeration & Air-condition	93	161	254	224	110	334	588
Dressmaking	555	110	812	1,934	635	2,569	3,381

Cookery	4,027	110	4,137	4,702	126	4,828	8,965
Hairdressing	19	182	201	64	46	110	311
General Agriculture	193		193	228	240	468	661

**Legend**

PRO – Proficiency

TT – Trade Test

**Table 4: Statistics for Secretarial Examination for 2002 – 2007**

LEVELS	2002	2003	2004	2005	2006	2007
Typist	2,567	4,479	4,740	4,845	3,395	4,048
Senior Typist	486	520	631	641	449	535
Stenographer	533	1,028	1,198	211	848	1,012
Senior Stenographer	144	173	243	213	149	178
Stenographer Secretary	65	68	87	142	99	119
Private Secretary	35	45	59	74	54	61
<b>TOTAL</b>	<b>3,830</b>	<b>6,313</b>	<b>6,958</b>	<b>7,126</b>	<b>4,994</b>	<b>5,953</b>

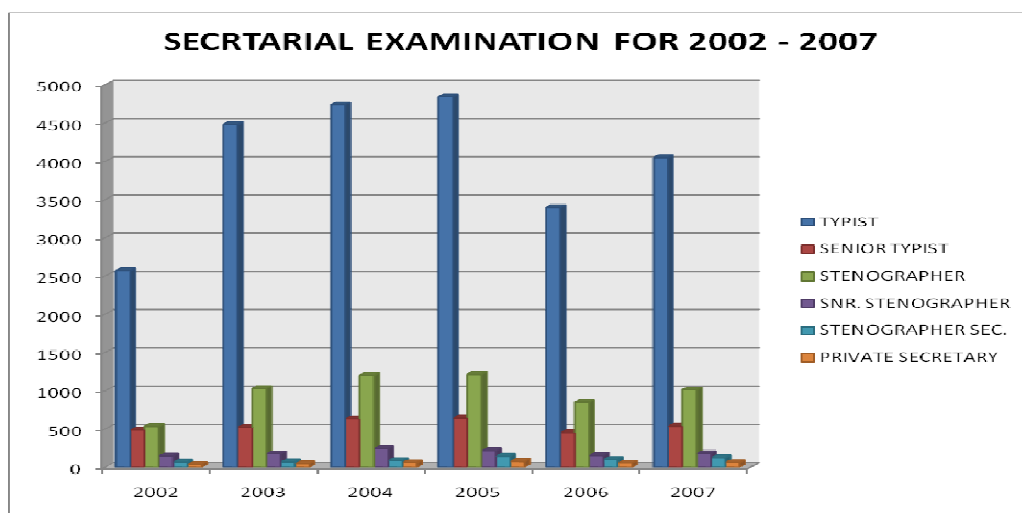


Figure 3

**Table 5: NVTI Trainee Enrolment for 2005-2007**

Name of Institution	2005			2006			2007		
	No. of Males	No. of Females	Total	No. of Males	No. of Females	Total	No. of Males	No. of Females	Total
Kumasi VTC	163	67	230	520	107	627	489	118	607
St Clares' VTC		139	139		155	155		155	155
Biriwa VTRC	359	303	662	385	182	567	385	182	567
Winneba VTC	211	13	224	199	3	202	199	3	202
Gomoa Aadaa VTC	98	11	109	32	3	35	32	3	35
Our Lady of Fatima	101	64	165	117	70	187	206	71	277
Burma Camp PTC	59		59	134	1	135	126		126
Manso Amenfi VTC	182	100	282	174	112	286	174	112	286
NCCTC Dansoman	429	79	508	429	82	511	429	82	511
St Mary's VTC Tamale		104	104		76	76		69	69
Kanda CTC	6	52	58	3	61	64	123	11	134
KIST Kumawu	72	32	104	61	27	88	30	24	54
Buoho VTC	123	3	126	138	2	140	135	3	138
Charlotte Dolphyne	29	21	50	24	19	43	27	18	45
St Anne's VTC		156	156		62	62		208	208
Tamale VTC	169	23	192	86	31	117	86	31	117
EPTTC, Alavanyo VTC	254	134	388	149	101	250	23	39	62
Takoradi VTC	398	11	409	405	16	421	401	10	411
Nandom VTC	254	8	262	256	7	263	186	6	192
Anum VTC	68	12	80	72	3	75	78	9	87
Yamfo VTC	136	21	157	153	10	163	163	10	173
Toh-Kpalime VTC	130	63	193	61	3	64	70	15	85

St Mary VTC Asamankese		165	165		149	149		138	138
Assin Fosu VTC	247	44	291	203	54	257	246	51	297
Pilot Trg Kokomlemle	559	1	560	306	2	308	371	2	373
CYO Sovie VTC	25	62	87	25	63	88	22	30	52
St Theresa Chinderi	43	31	74	23	12	35	24	15	39
Dorma VTC	227	6	233	132	4	136	163	19	182
St Basilides VTC	189	6	195	192	13	205	210	6	216
Breman Asikuma	94	9	103	122	11	133	128	12	140
Bawku VTC	57	91	148	62	103	165	73	62	135
Caring Sisters VTC		43	43		32	32		43	43
Abetifi VTC	169	31	200	158	29	187	261	71	332
Kofi Annan VTC	49	75	124	18	21	39	9	6	15
Business Studies Centre	17	71	88	126	61	187	127	118	245
Father Dogli	171	15	186	165	12	177	163	10	173
Namalteng Practical Sch.	24	19	43	13	18	31	18	18	36
<b>TOTAL</b>	<b>5,212</b>	<b>2,085</b>	<b>7,297</b>	<b>4,943</b>	<b>1,717</b>	<b>6,660</b>	<b>4,932</b>	<b>1,778</b>	<b>6,710</b>

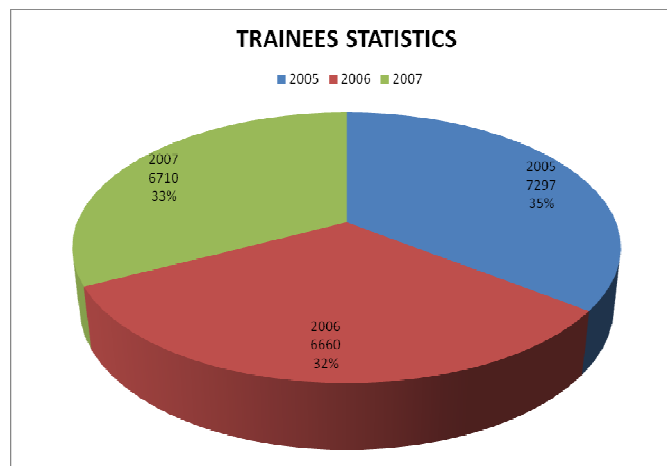
**Table 6: Cumulative Gender Statistics 2005-2007**

Male	Female	Total
15,087	5,580	20,667

**Table 7: Statistics of Trainees for the Period 2005 - 2007**

2005	2006	2007	Total
7,297	6,660	6,710	20,667

**Pie chart showing trainees statistics for 2005-2007**



**Figure 4**



**Table 8:**

**Statistics of Human Resource Training for the Period 2001 – 2007**

Training Programme	Year/Number Trained							Total
	2001	2002	2003	2004	2005	2006	2007	
Defensive Driving	136	213	126	168	46	69	116	874
Reception Training	19	30	14	15		10		88
Instructional Tech Course	30	54	60			38		182
Driver Inst Training			128	25	18	19		190
Transport Management							10	10
Strategic Driving Training						15		15
Up Grading Skills							3	3
Secretary	20	71						91

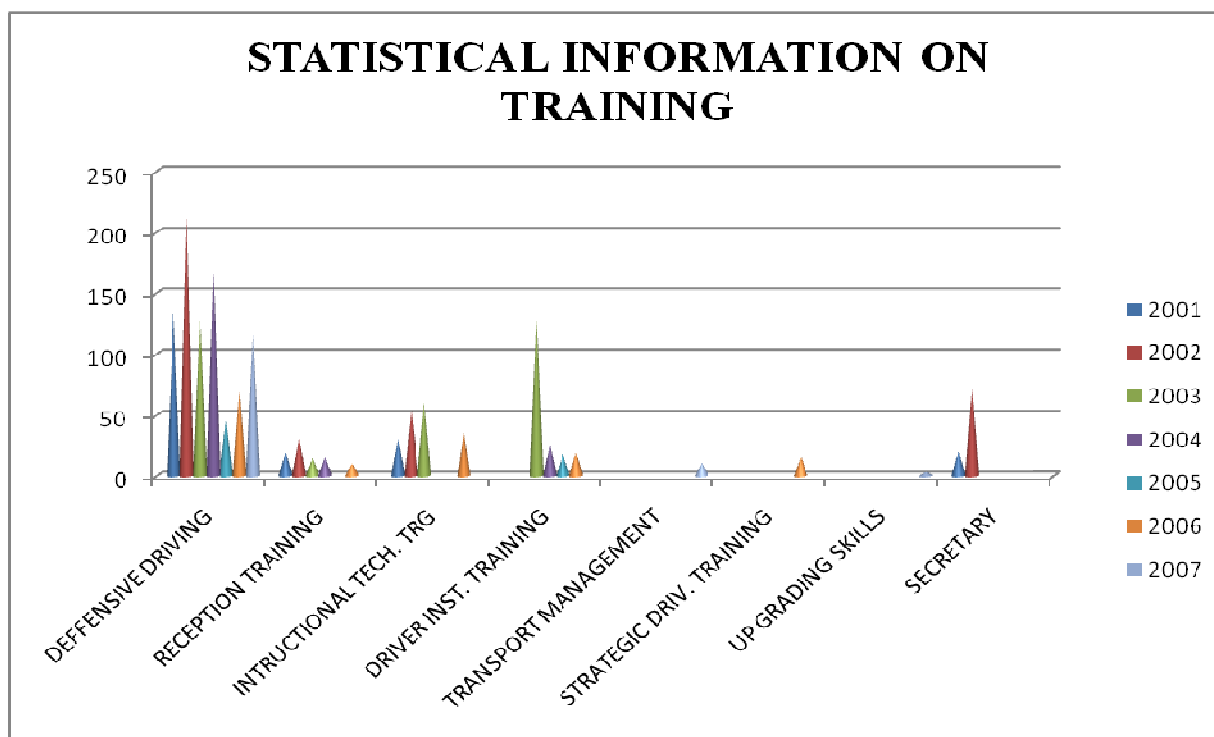


Figure 5

Table 9: Regional distribution of registered private vocational institutions

Region	Private Schools Registered
Northern	15
Upper West	7
Upper East	8
Brong Ahafo	25
Greater Accra	103
Volta	44
Ashanti	50
Western	19
Central	26

Eastern	38
Total	335

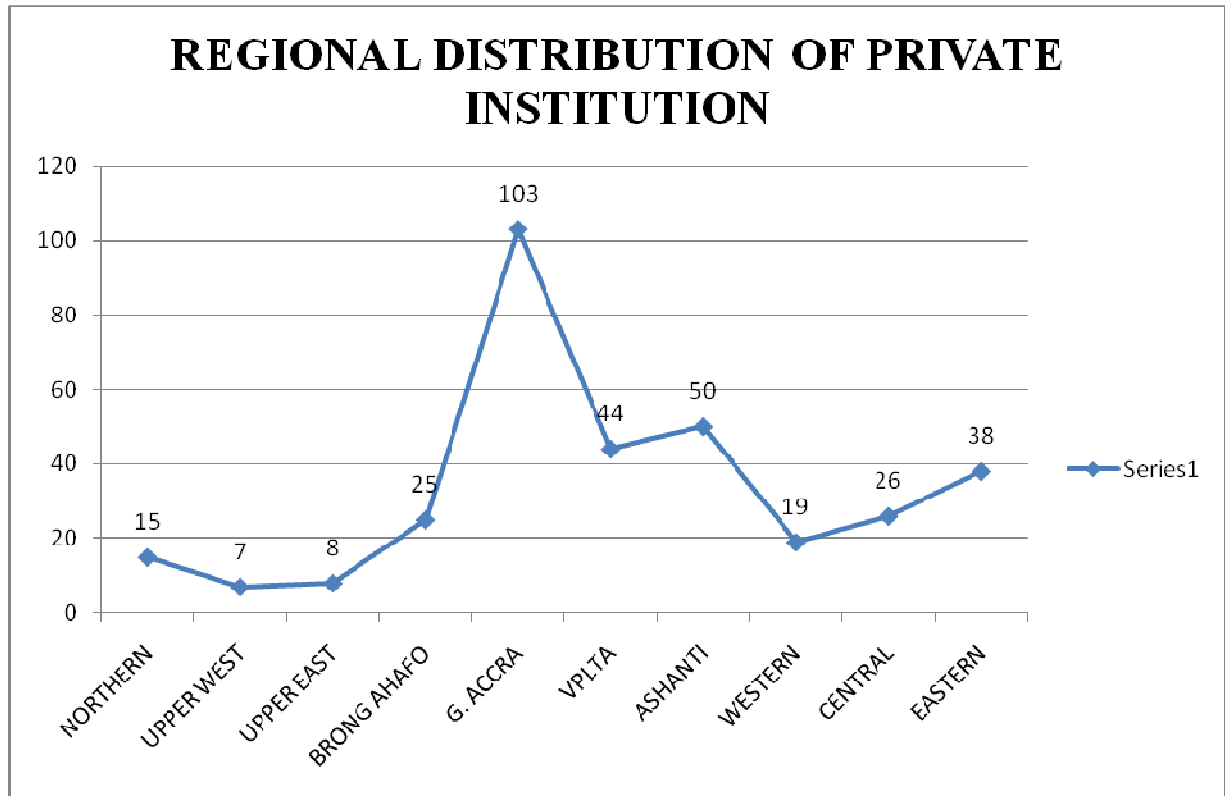


Figure 6